

# MULTIPLIO

Gelato





# Multiplo

H 240

P 170

L 108

Gelato

# MULTIPLLO

	TN Chiller	TB Freezer	TB/TN Dual Temp
RS-Static		•	
RV-Ventilated			
TCS-Heated			
CH-Chocolate			

## Installation

Plug-in

## Temperature

-6 / -14 °C

## Refrigerant

R452A (Remote)

## Refrigeration

Induction  
(Patented)

## Defrost

Off cycle

## Climate class

7

## Service top

Stainless steel

## Equipment handling

Height-adjustable feet

## Installazione

Plug-in

## Temperatura

-6 / -14 °C

## Refrigerante

R452A (Remoto)

## Refrigerazione

Induzione  
(Patented)

## Sbrinamento

Fermata compressore

## Classe climatica

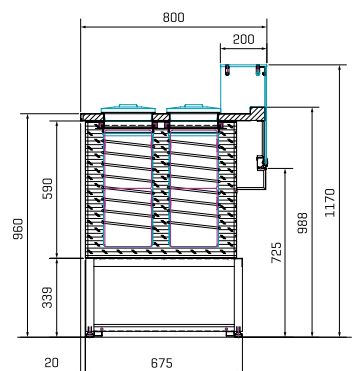
7

## Piano di servizio

Acciaio inox

## Movimentazione

Piedini regolabili in altezza




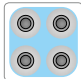
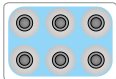
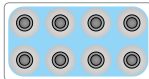
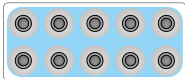

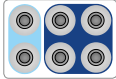
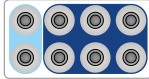
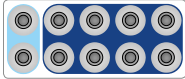
## Multiplo

	75	100	125	150
	T1 - T2	T1 - T2 - T3	T1 - T2 - T3	T1 - T2 - T3
<b>External dimensions (LxDxH)</b> Dimensioni esterne (LxPxH)	770x805 x1170 mm	1020x805 x1170 mm	1270x805 x1170 mm	1520x805 x1170 mm
<b>Net weight</b> Peso netto	- kg	- kg	- kg	- kg
<b>Refrigeration</b> Refrigerazione	<b>Induction</b> Induzione			
<b>Refrigerant</b> Refrigerante	R452A			
<b>Climate class</b> Classe climatica	7			
<b>Operating conditions</b> Condizioni ambientali	35 °C / 75 %RH			
<b>Product temperature</b> Temperatura prodotto	-6/-14 °C			
<b>Compressor (q.ty - type)</b> Compressore (q.tà - tipologia)	<b>1 - Hermetic</b> 1 - Ermetico	<b>2 - Hermetics</b> 2 - Ermetici		
<b>Defrost</b> Sbrinamento	<b>Off cycle</b> Fermata compressore			
<b>Power supply</b> Alimentazione	230 V / 1 Ph / 50 Hz			
<b>Electrical input (nominal)</b> Assorbimento elettrico (regime)	470 W / 3,8 A	600 W / 4,3 A	930 W / 4,4 A	1000 W / 5 A
<b>Electrical input (defrost)</b> Assorbimento elettrico (sbrinamento)	-	-	-	-

Technical sheet about models whit condensing unit included with air cooled  
Dati tecnici riferiti a modelli con unità a bordo con condensazione ad aria

## Setup

Allestimento

7 Lt ø 200 x 250 h		4 (+4)	6 (+6)	8 (+8)	10 (+10)
<b>T1</b>					
<b>T1 - T2</b>					
<b>T1 - T2 - T3</b>	-	